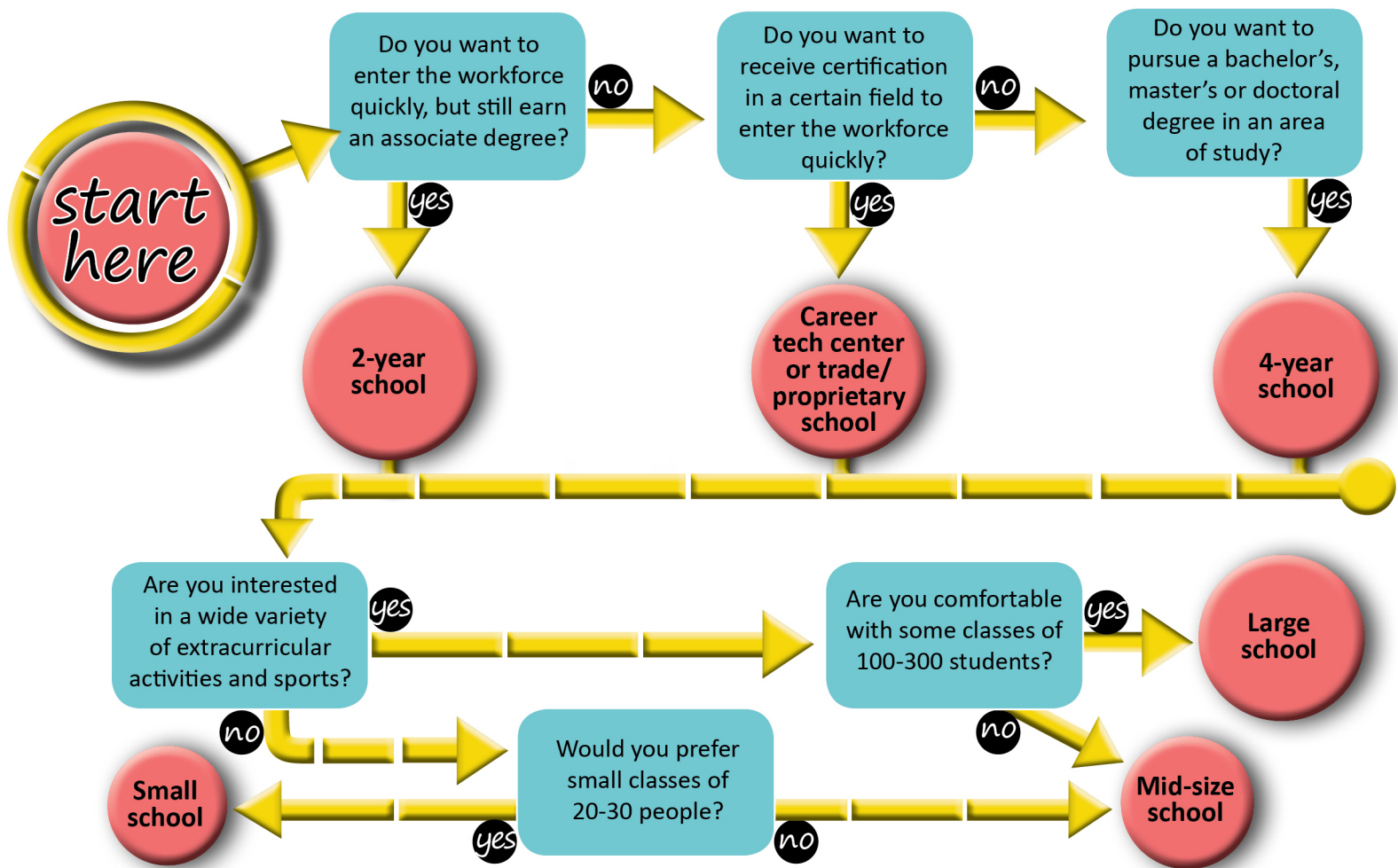


College Fair Worksheet

Picking a College Type

Choosing the right school can be a difficult task. Use this chart to help you decide what type of school is right for you. Read each question and think about your interests and priorities. Answer 'yes' or 'no' and follow the corresponding arrows to reveal the type of school that may best meet your needs.

Once you've decided on the type of school you wish to attend, check out a college fair to learn more about what specific Oklahoma colleges have to offer. Use the chart on the back to compare at least three schools you're interested in attending.



For more detailed information about selecting the right school for you, check out UCanGo2.org and OKcollegestart.org.

College Fair Questions

School Name:

School Name:

School Name:

Do you offer my planned major?

Do you offer academic counseling and support services?

Does your campus help students find internships or jobs in their chosen fields?

What's your average class size?

What types of extracurricular activities do you offer?

What scholarships do you offer for incoming freshmen? What's the application deadline?

What are your admission requirements?

What's your enrollment deadline?

2022 Oklahoma College Fairs

FAIR	LOCATION	DATE	TIME
Tulsa Public Schools Fair	The University of Tulsa	Sept. 12	8:00 AM
Union College Night Fair	Union High School	Sept. 12	6:30 PM
Ponca City Public Schools Fair	Ponca City High School	Sept. 13	9:00 AM
Sand Springs Area Wide Fair	Charles Page High School	Sept. 13	5:00 PM
Bixby Public Schools Fair	Bixby High School	Sept. 14	9:30 AM
Bartlesville Area College Fair	Bartlesville High School	Sept. 14	2:00 PM
Muskogee Public Schools Fair	Muskogee High School	Sept. 15	9:00 AM
Broken Arrow College Night	Broken Arrow High School	Sept. 15	5:30 PM
Stillwater Public Schools Fair	Stillwater High School	Sept. 16	9:00 AM
Tahlequah Area Wide Fair	Northeastern State University- Tahlequah	Sept. 19	9:00 AM
Warner Area Wide Fair	Connors State College	Sept. 20	8:30 AM
Rogers County Area Wide Fair	Rogers State University	Sept. 21	9:00 AM
Northeast Area Wide Fair	Northeastern Oklahoma A&M College	Sept. 22	9:30 AM
Ada Area Wide Fair	East Central University	Sept. 26	8:45 AM
Wetumka Area Wide Fair	Wes Watkins Technology Center	Sept. 26	12:30 PM
Texoma Area Wide Fair	Southeastern Oklahoma State University	Sept. 27	9:00 AM
Ardmore Area Wide Fair	Southern Tech	Sept. 27	5:00 PM
Idabel Area Wide Fair	Kiamichi Technology Center- Idabel	Sept. 28	8:30 AM
Hugo Area Wide Fair	Kiamichi Technology Center- Hugo	Sept. 28	1:00 PM
Wilburton Area Wide Fair	Eastern Oklahoma State College	Sept. 29	9:00 AM
Poteau Area Wide Fair	Carl Albert State College	Sept. 30	9:00 AM
Eastern Oklahoma County Area Wide Fair	Rose State College	Oct. 3	9:00 AM
Oklahoma City Area Wide Fair	Mid-America Christian University	Oct. 4	8:00 AM
Oklahoma City Area College Night	Oklahoma City Community College	Oct.4	5:30 PM
Shawnee Area Wide Fair	Oklahoma Baptist University	Oct. 5	9:30 AM
Edmond College Night	The University of Central Oklahoma	Oct. 5	6:00 PM
Chickasha Area Wide Fair	University of Science and Arts of Oklahoma	Oct. 6	9:00 AM
Kingfisher Area Wide Fair	Kingfisher County Fairgrounds	Oct. 6	1:30 PM
Canadian County Area Wide Fair	Redlands Community College	Oct. 7	9:30 AM
Weatherford Area Wide Fair	Southwestern Oklahoma State University	Oct. 17	8:30 AM
Altus Area Wide Fair	Western Oklahoma State College	Oct. 18	9:00 AM
Lawton Area Wide Fair	Cameron University- Lawton	Oct. 19	9:00 AM
Duncan Area Wide Fair	Cameron University- Duncan	Oct. 20	9:00 AM
Woodward Area Wide Fair	High Plains Technology Center	Oct. 24	9:00 AM
Panhandle Area Wide Fair	Oklahoma Panhandle State University	Oct. 25	9:00 AM
Beaver County Public Schools Fair	Beaver High School	Oct. 25	1:00 PM

Alva Area Wide Fair	Northwestern Oklahoma State University	Oct. 26	9:30 AM
Laverne Public Schools Fair	Laverne High School	Oct. 26	1:00 PM
Enid Public Schools Fair	Enid High School	Oct. 27	8:40 AM
Tonkawa Area Wide Fair	Northern Oklahoma College- Tonkawa	Oct. 28	1:00 PM